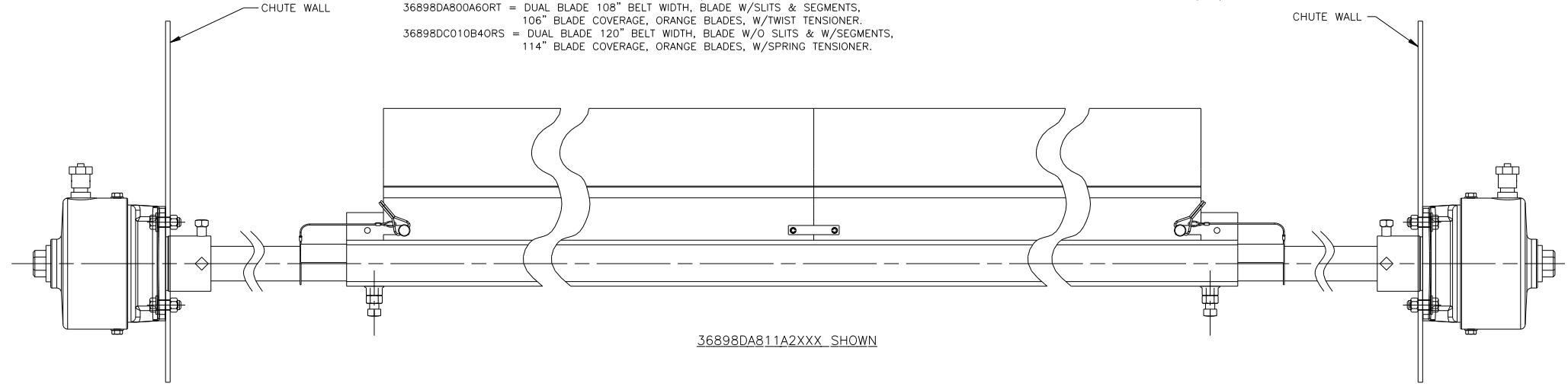
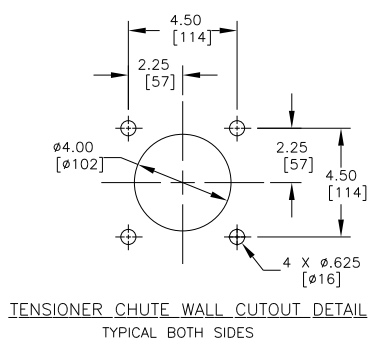
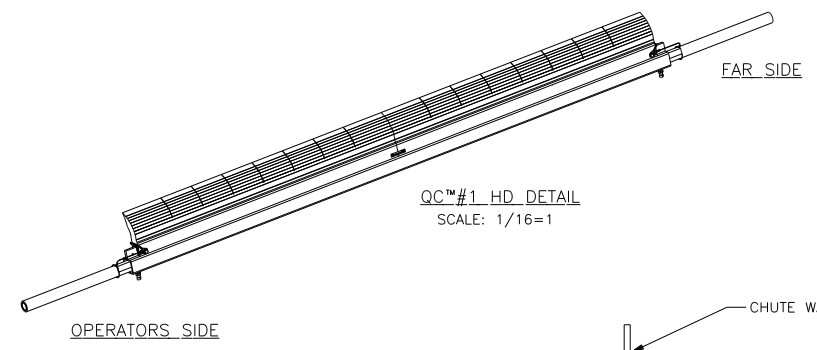
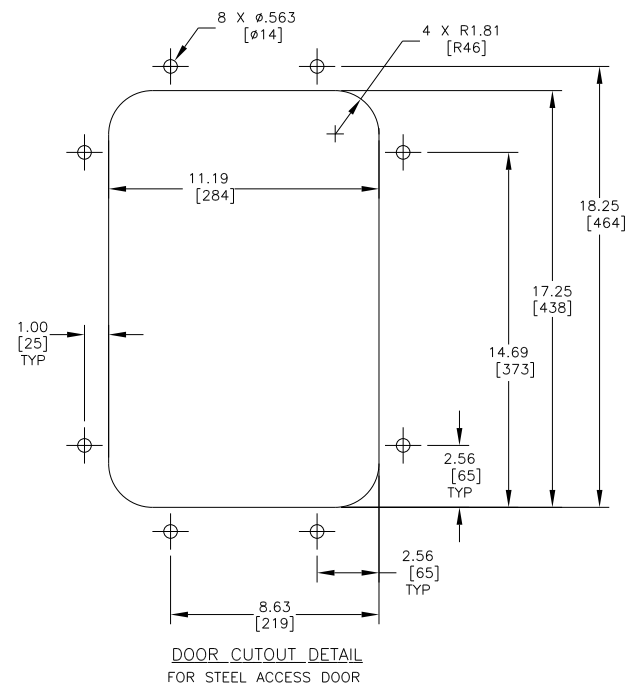


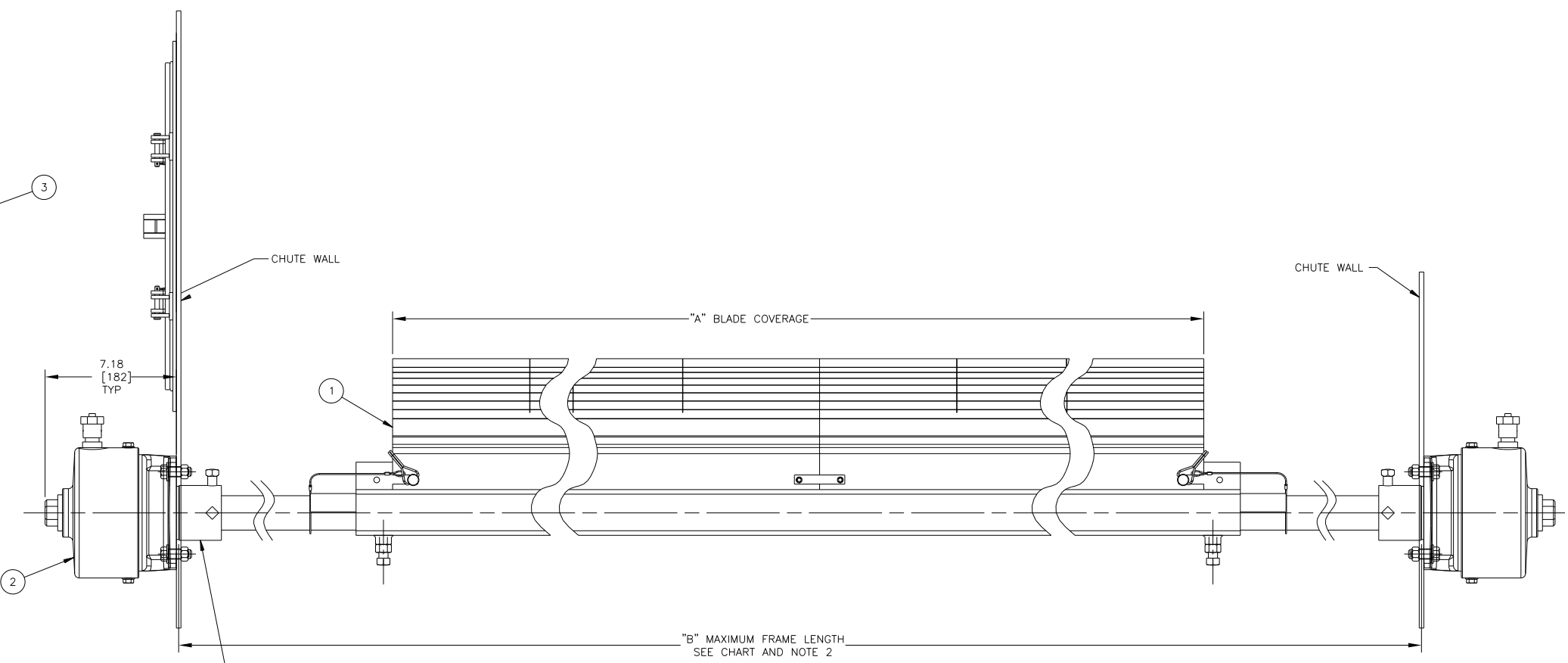
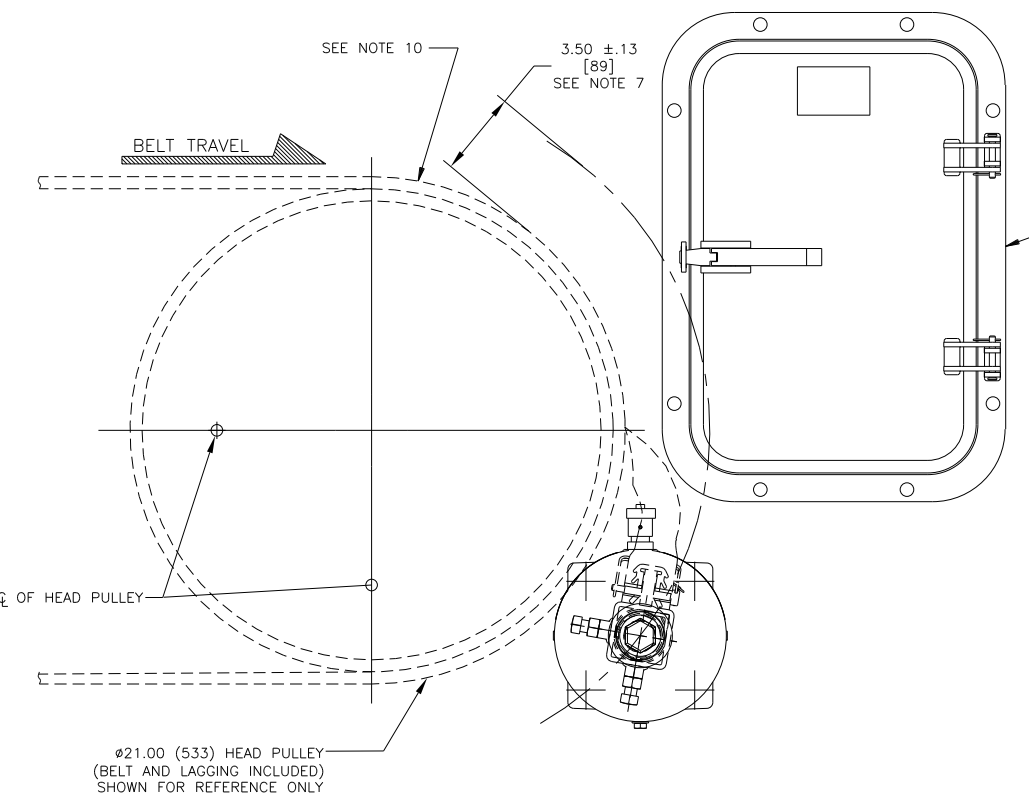
PART NUMBER	BELT WIDTH	DIMENSION "A" BLADE COVERAGE	DIMENSION "B" FRAME LENGTH
36898DA8XA2XXX	108.00 [2600-2800]	102.00 [2591]	147.00 [3734]
36898DA8XA6XXX	108.00 [2600-2800]	106.00 [2692]	147.00 [3734]
36898DC0XB4XXX	120.00 [2800-3000]	114.00 [2896]	159.00 [4039]

ITEM	QTY.	DESCRIPTION	PART NUMBER
1	1	MARTIN <sup>®</sup> QC <sup>™</sup> #1 HD DUAL BLD MNFRM ASM	36898DXXXXXXX
2	1	MARTIN <sup>®</sup> DUAL TWIST <sup>™</sup> TENSIONER ASM	38850-2
3	1	MARTIN <sup>®</sup> LOW PROFILE STL DOOR 12X18	CYA-1218



NOTES:  
 1) ALL DIMENSIONS ARE GIVEN IN INCHES (MM) AND ARE FOR REFERENCE ONLY.  
 2) FRAME IS ADJUSTABLE TO DESIRED LENGTH.  
 3) THE "D" AFTER THE 5 DIGIT P/N INDICATES DOUBLE BLADE.  
 THE FIRST TWO XX'S INDICATE BELT WIDTH: A=10, B=11, C=12:  
 EXAMPLE: A8 = 108 ; B4 = 114 ; C0 = 120.  
 THE THIRD X INDICATES A BLADE WITH (0) OR WITHOUT (1) SLITS.  
 THE FOURTH X INDICATES A BLADE WITH (0) OR WITHOUT (1) SEGMENTS.  
 THE FIFTH AND SIXTH XX'S INDICATE BLADE COVERAGE: A=10, B=11, C=12:  
 EXAMPLE: A2 = 102 ; A6 = 106 ; B4 = 114 ; C0 = 120.  
 THE SEVENTH AND EIGHT XX'S INDICATE BLADE COLOR (SEE CHART).  
 THE NINTH X INDICATES IF A TENSIONER IS INCLUDED:  
 EXAMPLE (T=TWIST TENSIONER) AND (S=SPRING TENSIONER).  
 ASSEMBLY EXAMPLES:  
 36898DA811A2NB = DUAL BLADE 108" BELT WIDTH, SOLID BLADE, 102" BLADE COVERAGE, NAVY BLUE BLADES, W/O TENSIONER.  
 36898DA800A6ORT = DUAL BLADE 108" BELT WIDTH, BLADE W/SLITS & SEGMENTS, 106" BLADE COVERAGE, ORANGE BLADES, W/TWIST TENSIONER.  
 36898DC010B4ORS = DUAL BLADE 120" BELT WIDTH, BLADE W/O SLITS & W/SEGMENTS, 114" BLADE COVERAGE, ORANGE BLADES, W/SPRING TENSIONER.

NOTES (CONT'D):  
 4) WHERE EXTREME OR UNUSUAL CONDITIONS EXIST, OR SPECIAL MAINFRAME LENGTHS ARE REQUIRED, CONSULT MARTIN<sup>®</sup> ENGINEERING FOR ASSISTANCE.  
 5) TWIST TENSIONER ASSEMBLY MAY BE BOLTED OR WELDED IN PLACE. MARTIN<sup>®</sup> ENGINEERING RECOMMENDS BOLTING WHEN APPLICABLE FOR EASIER MAINTENANCE AND ACCESSIBILITY. IF WELDING IS REQUIRED USE TWIST TENSIONER ASSEMBLY P/N 38850-2A.  
 6) REFER TO OPERATOR'S MANUALS (M3296 AND M3618) FOR INSTALLATION INSTRUCTIONS.  
 7) MARTIN<sup>®</sup> ENGINEERING RECOMMENDS THE CLEANER BE LOCATED SO THAT THE BLADE TIP IS AT OR SLIGHTLY BELOW HORIZONTAL CENTERLINE OF HEAD PULLEY. CLEANER IS SHOWN BELOW IN RECOMMENDED WORKING POSITION.  
 8) FOR SEVERE APPLICATIONS WELD MAINFRAME ADAPTER DIRECTLY TO MAINFRAME.  
 9) THE QC #1 HD PRE-CLEANER BLADE IS DESIGNED TO REMOVE INITIAL CARRYBACK ONLY. DO NOT OVERTENSION!  
 10) THE QC #1 HD PRE-CLEANER BLADE IS DESIGNED FOR HEAD PULLEYS WITH A MINIMUM EFFECTIVE DIAMETER OF 12.00 (305).



36898DA810A2XXX SHOWN  
 HEAD PULLEY NOT SHOWN FOR CLARITY

© Copyright 2011 Martin Engineering. All rights reserved. Covered by U.S. and foreign patents pending and issued. ® and TM indicate trademarks of Martin Engineering.

**MARTIN ENGINEERING** NEPONSET ILLINOIS USA

TITLE	MARTIN <sup>®</sup> QC <sup>™</sup> #1 HD DUAL BLD ASM W/DUAL TWIST <sup>™</sup> TENSIONER 12 X 18 STEEL ACCESS DOOR	DRAWN JAH	DATE 04/05/11
ENG. RAV	CHECKED	DATE 04/06/11	APPROVED JAH
DATE 04/06/11	DATE 04/06/11	DATE 04/06/11	SCALE 1/4=1

NO.	DESCRIPTION	ECN	DATE	BY
AutoCAD	REVISION			

SALES DRAWING	MDO825	S50090-DUAL
---------------	--------	-------------