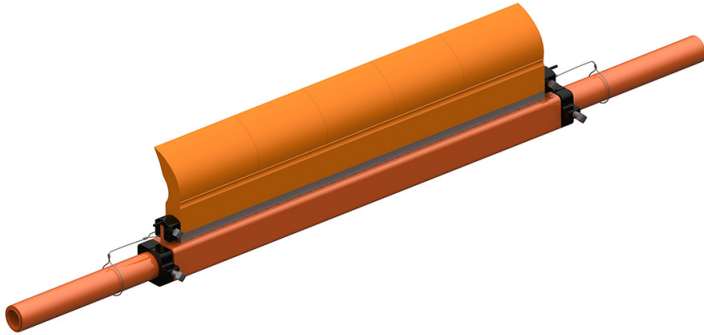


Martin® QC1+™ Cleaner PV with Three-Piece Mainframe



The [Martin® QC1+™ Cleaner PV](#) introduces the next generation of belt cleaning technology.

A truly revolutionary innovation in belt cleaning design, the QC1+™ Cleaner PV provides the cleanest belt and longest blade life— at the lowest cost.

FEATURES & BENEFITS

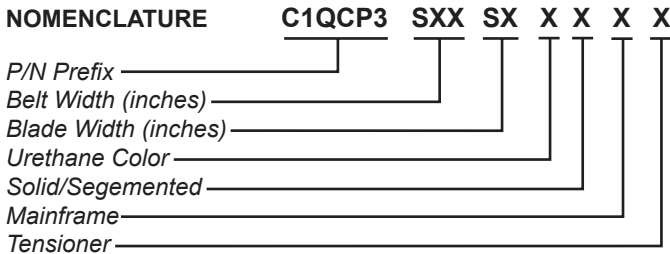
- Same ease of installation as original Martin® QC1™ Cleaners, maintaining standard installation and service costs.
- Utilizes Martin's highly effective, patented CARP profile, ensuring the highest level of cleaning performance expected from a Martin® Belt Cleaner.

SPECIFICATIONS

Maximum Belt Speed fpm (m/sec)	Maximum Service Temperature	Pulley Diameter in. (mm)	Mounting Location in. (mm)
500 (2.54)	160°F (70°C) Continuous 180°F (82°C) Intermittent	12–16 (300–400)	2.75 (70)

High-performance urethanes are available; see your Martin Engineering representative for assistance in specifying non-standard products. Refer to Form No. L3375.

NOMENCLATURE



BELT WIDTH

000: No Blade
SXX: XX indicates belt width in inches 18 thru 72

BLADE WIDTH

00: No Blade
S4: 4 Inches less Belt Width
S6: 6 Inches less Belt Width
S8: 8 Inches less Belt Width

URETHANE COLOR

0: No Blade
B: Brown
T: Tan
G: Green
N: Navy Blue
O: Orange

SOLID/SEGMENTED

0: Segmented Blade/No Blade
1: Solid Blade

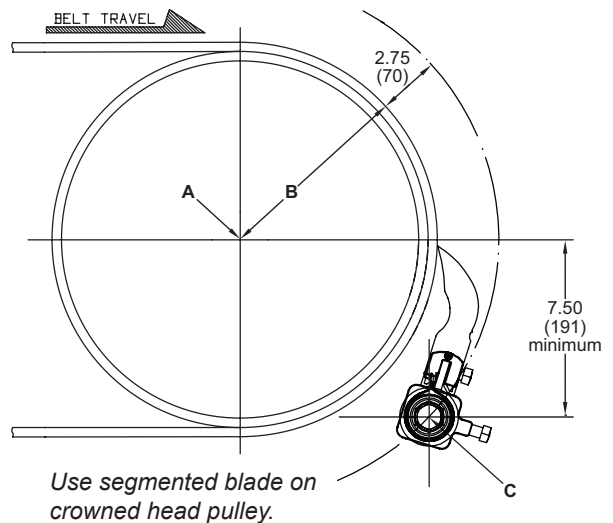
MAINFRAME

P: Painted Steel with Aluminum Blade Insert
E: Painted Steel with Extended Torque Tubes
F: Stainless Steel
Z: Stainless Steel with Extended Torque Tubes
T: Painted Steel with Stainless Steel Blade Insert

TENSIONER

Blank: No Tensioner
T: Martin® Twist Tensioner (P/N 38850)
F: Martin® Twist Tensioner (P/N 31443-SS)
S: Martin® Spring Tensioner (P/N 38180)
P: Martin® Spring Tensioner (P/N 38180-SS)

MOUNTING LOCATION



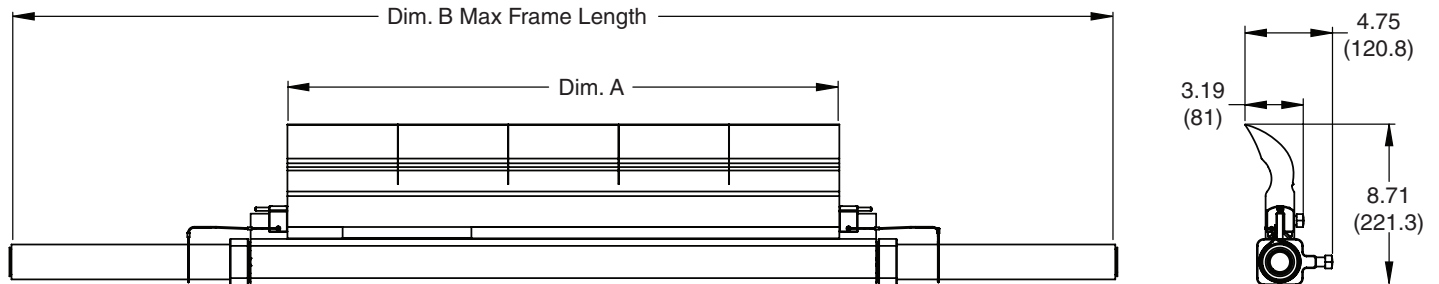
TECHNICAL DATA SHEET

DIMENSIONS -- in. (mm)

Belt Width in. (mm)		Mainframe Length (B) in. (mm)	
18	(400-500)	34	(864)
24	(500-650)	46	(1168)
30	(650-800)	52	(1321)
36	(800-1000)	60	(1524)
42	(1000-1200)	72	(1829)

Belt Width in. (mm)		Mainframe Length (B) in. (mm)	
48	(1200-1400)	78	(1981)
54	(1400-1600)	84	(2134)
60	(1600-1700)	90	(2286)
66	(1700-1800)	96	(2438)
72	(1800-2000)	102	(2591)

Note: Dimension A equals belt width minus either 4, 6, or 8 inches.
Dual Tensioners are required for belt widths 54 in. (1400 mm) and greater.



RECOMMENDED TENSIONERS

Tensioner	P/N
Martin® Twist Tensioner–Square	31443
Martin® Twist Tensioner–Round	38850
Martin® Spring Tensioner	38180

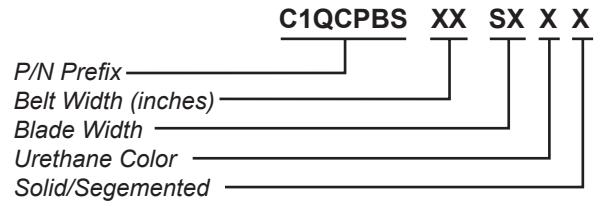
ACCESSORIES

Part	P/N
Martin® Steel Inspection Door	CYA-1218
Martin® Hanger Mount Standard Assembly	27382

FREQUENTLY ASKED QUESTIONS

- My Pre-Cleaner keeps flipping through.
The mounting location may be too far away from the belt. Relocate to the proper dimension. Replace the mainframe or end weldments if they are bent.
- My Pre-Cleaner is wearing more in the center of the blade.
The blade is too wide for this application. Replace with a shorter length blade.

REPLACEMENT BLADE NOMENCLATURE



BELT WIDTH

SXX: XX indicates belt width in inches 18 thru 72

URETHANE COLOR

- B:** Brown
- T:** Tan
- G:** Green
- N:** Navy Blue
- O:** Orange

BLADE WIDTH

- S4:** 4 Inches less Belt Width
- S6:** 6 Inches less Belt Width
- S8:** 8 Inches less Belt Width

SOLID/SEGMENTED

- 0:** Segmented without Slots
- 1:** Solid without Slots
- 2:** Segmented with Slots
- 3:** Solid with Slots
- 4:** Segmented without Slots & with Blade Holders
- 5:** Solid without Slots & with Blade Holders



Martin Engineering USA
 One Martin Place
 Neponset, IL 61345-9766 USA
 800 544 2947 or 309 852 2384
 Fax 800 814 1553
 www.martin-eng.com

**COMPANY WITH
 QUALITY SYSTEM
 CERTIFIED BY DNV GL
 = ISO 9001 =**